
SRT Nutritional Software

For IHT Systems Using SRT Software

Date: August 2023

Notices

© 2023 International Health Technologies, Inc. (also referred to herein as International Health Technologies and IHT). Printed in the U.S.A. Any other products mentioned are either trademarks or registered trademarks of their respective owners.

All rights reserved.

No part of this publication may be reproduced, photocopied, sorted on a retrieval system or transmitted without the express prior written consent of International Health Technologies.

Disclaimer and Limitation of Liability

International Health Technologies Inc. makes no representations, guarantees or warranties with respect to the contents or use of this manual and/or IHT Devices, and specifically disclaims any express or implied warranties or guarantees regarding benefits. International Health Technologies reserves the right to make changes to any and all parts of this manual and/or systems without notice. International Health Technologies Devices do not diagnose or treat. They are to be used solely as galvanic skin response (GSR) devices.

Contents

NUTRITIONAL - INTRODUCTION	3
STARTING THE NUTRITIONAL SOFTWARE	3
PROTOCOL REQUIREMENTS	3
PROTOCOL SELECTION	3
EPIC FAN OFF	3
STARTING THE NUTRITIONAL	4
UNDERSTANDING THE NUTRITIONAL TABLE	4
PRODUCT VIEW LIMITER	5
TESTING	5
PRODUCT SORT	5
STAY ON TOP	5
FULL PRODUCT LIST	5
SCREEN NAVIGATION	6
INITIAL PRODUCT SELECTION SCREEN	6
FINAL PRODUCT CHECK SCREEN	6
ITEM DETAILS SCREEN	7
SELECT REPORT DETAILS SCREEN	7
REPORT CONTENTS.....	8
MANDATORY CONTENTS	8
VISIT DETAILS	8
NUTRITIONAL TIMETABLE	8
NUTRITIONAL HISTORY	8
READINGS.....	8
READINGS IN FULL	8
SELECTED PRODUCTS.....	9
PRODUCT DETAILS	9
REPORT OPTIONS	9
DURATION IN DAYS	9
TIMETABLE DOUBLE SPACED	9
SPECIAL FONT	9
B&W (BLACK AND WHITE)	10
USE CLINIC HEADER	10
USE CLINIC FOOTER	10
SAVING REPORT LAYOUT	10
DELETE REPORT LAYOUTS	10
PERFORMING REPORTS	11
PREVIEW REPORT	11
PREVIEWING SCREEN CONTROLS	11
PDF THE REPORT	11
PRINT THE REPORT	11
NUTRITIONAL DETAILS SAVED	12
PRODUCT DATA SAVED.....	12
CLEAR CLIENT'S NUTRITIONAL HISTORY	12
NUTRITION EDITOR.....	12
THE GENERIC NUTRITIONAL.....	12
USING THE NUTRITION EDITOR PROGRAM	12

Nutritional - Introduction

The SRT Nutritional integrates with the main SRT software application. It connects the issues associated with the **BioScan Body 100 library** with nutritional product lines. IHT has many different Nutritional protocols available. They are each authorized and registered separately and each is purchased separately from IHT.



Start by using the **SRT** software and scanning with the **BioScan Body 100 library** to obtain the Scan Outcome readings. The **SRT** software provides these scores to the **Nutritional** software, which has products associated with the items in **BioScan Body 100 library**. The **Nutritional** software also provides several clinic and patient reports that track selections and progress, provide patient education and drive compliance.

Note	<p>The information and instructions provided in the Nutritional section of this Operator’s Manual assume the following steps have been previously performed:</p> <ol style="list-style-type: none">1) The SRT software is running a client visit.2) Scanning on the client has been performed using the complete BioScan Body 100 library.
-------------	---

Starting the Nutritional Software

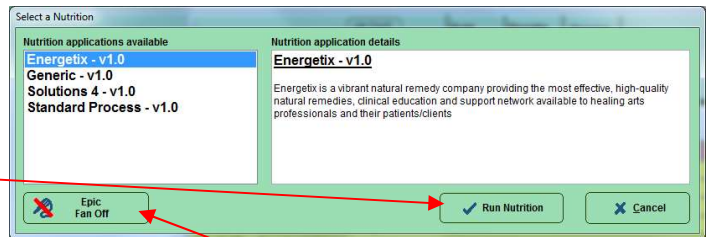
Protocol Requirements

The **Nutritional** protocols require scanning on the client using the complete **BioScan Body 100 library**.

Once the testing is complete, select abnormalities with the **Abnormal**  button and click the **Nutritional**  button icon in the top button bar.

Protocol Selection

Upon pressing the **Nutritional** icon button, a list of available protocols will be displayed on the **Select a protocol** screen. Clicking on a protocol will display a general company description from the company supplying products used in that **Nutritional** protocol. Once a protocol is selected, click the **Run Nutritional** button to start that **Nutritional** protocol.



Epic Fan Off

If the Epic Fan will be an irritation while performing a Nutritional, then turn it off now with the **Epic Fan Off** button.

Starting the Nutritional

When the Nutritional starts, it will read through the selected abnormal scan outcome readings and compare them to the products associated with them. After a few seconds, the main Nutritional screen will appear.



Understanding the Nutritional Table

The screenshot shows the 'Product Selection' window. Callouts include: 'Product Sorter' pointing to the 'Product Sort' section; 'Product Limiter' pointing to the 'Maximum main products to select' dropdown; 'Visit currently being displayed.' pointing to the 'Visit' dropdown; 'Detail on the currently selected product' pointing to the 'Generic Item name' and 'Available product items' section; 'Products suggested for these abnormal scores' pointing to the 'Main products' table; 'Nutritional company version information' pointing to the 'Version Info' button; 'Stay on top checkbox' pointing to the 'Stay on top' checkbox; and 'Add More Products' pointing to the 'Full product list' button.

Main products		Total	Outcome
<input checked="" type="checkbox"/> Test	<input type="checkbox"/> Renafood®	02	+164
Obtained from: Acid-base, "Mineral salts"			
<input checked="" type="checkbox"/> Test	<input type="checkbox"/> Zypan®	01	+096
Obtained from: "Vitamins complete"			
<input checked="" type="checkbox"/> Test	<input type="checkbox"/> Betacol®	01	+076
Obtained from: "Food additives"			

Note **IMPORTANT REMINDER:** Products are connected to the **BioScan Body 100 library** are established by International Health Technologies' Nutritional partners, and not by International Health Technologies. Products displayed always require that the trained healthcare practitioner be knowledgeable about the products before making any choice of which products, if any, are applicable to the patient's needs.

Product View Limiter

Product selections are established by International Health Technologies' Nutritional partners. In some instances, they have places ten or more products behind a single cell formula. The **Product View Limiter** drop-down box on the top of the screen limits the number of Main Products that are shown in the right Product Selection screen.



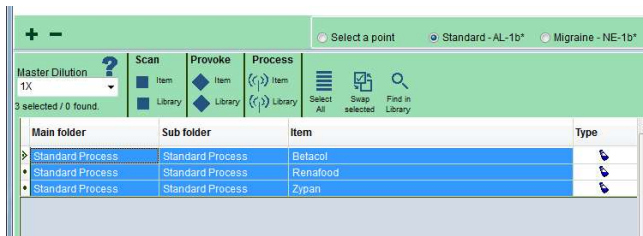
Tip

When learning a new product line find it helpful to limit the number of products offered as solutions. Typically, setting the "maximum main products to select" to 3-6 items would limit confusion and provide focus to the selection process.

Testing

Individual products can be sent back to the main **SRT** for further testing by pressing the **Test** button. If several items are selected with the check box them all the selected items can be tested with the **Test Selected** button.

Items sent to SRT appear in an SRT find box. At this point, they may be used in further Scan, Process or Provoke actions.



Note

It is left to the user to devise the test that is needed to determine which products to ultimately select and use.

Product Sort

If there is a multitude of products, then they may be sorted either by the total **BioScan Body 100 library items** that flagged the item or by the worst outcome score that flagged the item.



Stay on top

When checked, the **Stay on top** feature will make sure that other application windows do not overlay over the **Nutritional** application.

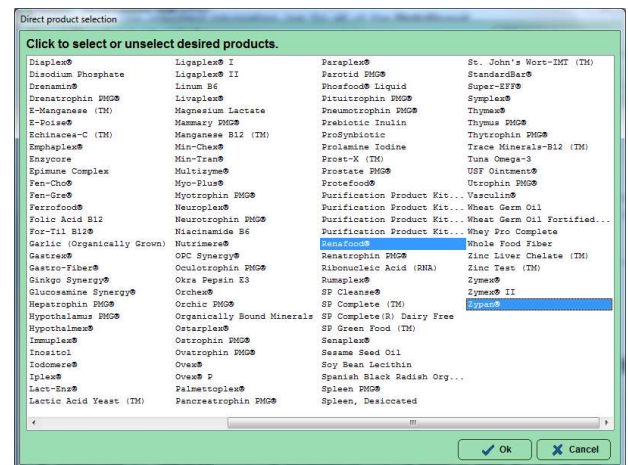


Full product list

If you know the product line, then you may wish to add additional products even though the **Nutritional** did not suggest them. Use the **Full product list** button to add additional products to the list.



Products already selected will be highlighted on the Direct product selection screen. Any product can be selected or unselected by clicking on it. When done press the **OK** button or press the **Cancel** button if you desire no changes made.



Screen Navigation

The standard navigation bar for all the **Nutritional** pages is located on the bottom right of each screen. The **Back** and **Next** buttons provide back and forth navigation between the screens. The **Exit** button should only be used when leaving the **Nutritional** pages and returning to the **SRT Testing Screen**. Details of each screen will be described later in this section.



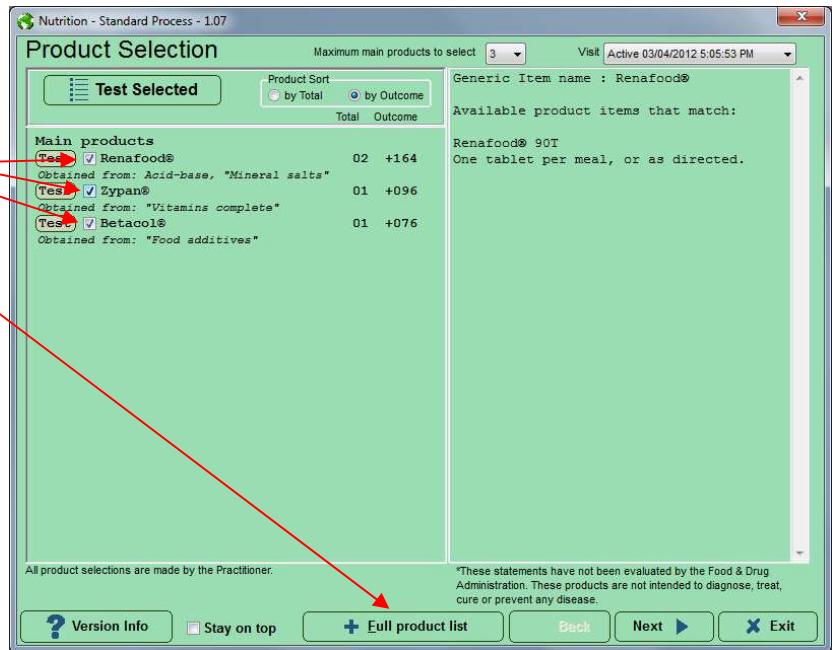
These are the four screens and their uses in the **Nutritional**.

Initial Product Selection Screen

Either from your knowledge or via some testing in SRT with the **Test** buttons, some select products by checking them.

Perhaps add additional products via **Full product list** button.

When done press the **Next** button.

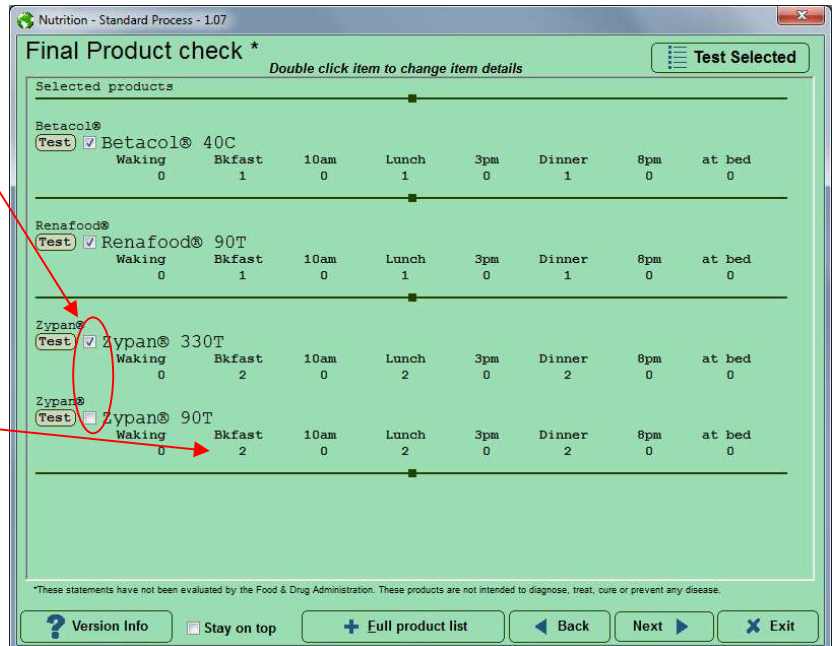


Final Product Check Screen

Some items have a variety of sizes. The various bottle sizes for each item are now listed. Select one where there is a choice.

Testing may still be performed via the **Test** buttons and additional products added via the **Full product list** button.

If a product usage timetable needs revision, then double click on it. The **Item detail screen** will appear.



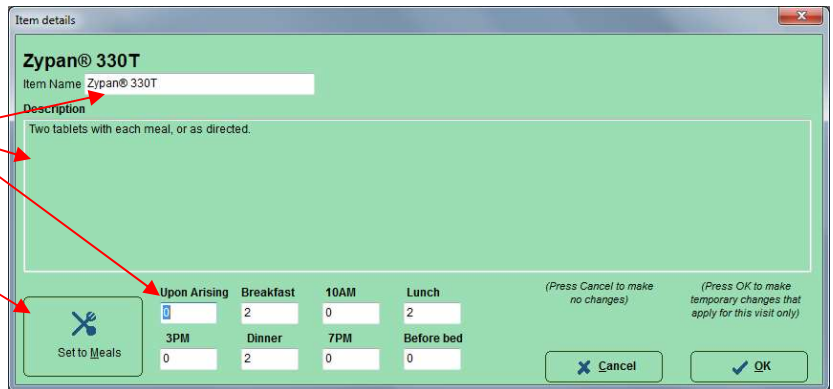
Item Details Screen

If you double clicked a timetable, this screen will be shown.

From it, you may change the **item name**, the **description**, and the **timetable numbers**.

Press the **Set to Meals** button to make the timetable one at breakfast, lunch, and dinner.

When done press the **OK** button to save the changes or the **Cancel** button to make no changes.



Changes are only applied in this visit. The Final Product Check Screen appears after pressing **OK** or **Cancel**.

Select Report Details Screen

From the final screen in **Nutritional** reports are generated.

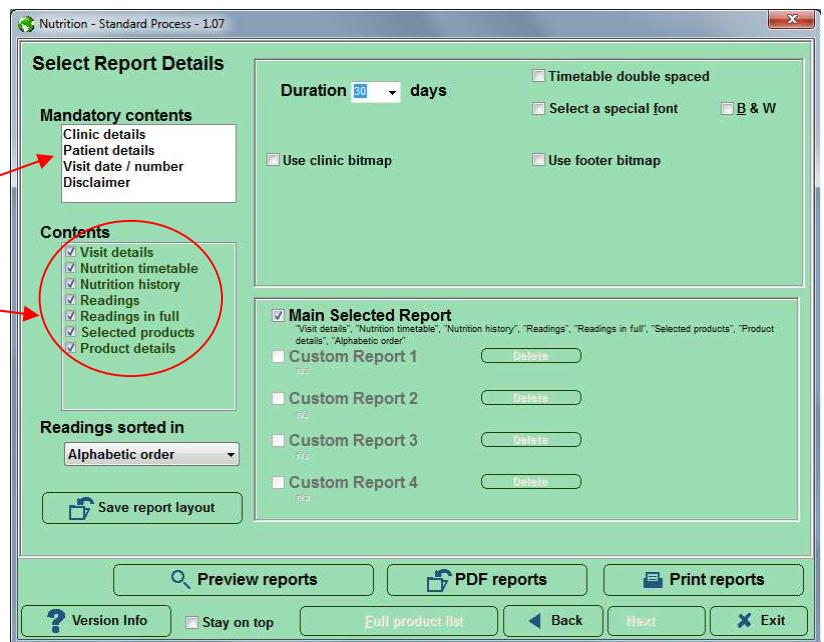
All reports will get the **Mandatory contents**. But with these items alone this is a bare bones report.

Check select some real **Contents** elements that you desire to have in the report.

Press **Preview reports** for a screen preview.

Press **PDF reports** for a PDF file report saved to disk.

Or press **Print reports** to send the report to your default printer.



Note	<p>In general, use Preview Reports button to preview the report before printing, to make sure the information is adequate before printing. The Preview Report Screen provides a printer button.</p>	
-------------	---	--

Report Contents

Mandatory contents

Every report will have mandatory contents on every report which are Clinic details, patient details, visit date and number, and the disclaimer. These details fill the header and footer of the report, so each report has some uniformity.

Tip	Your Clinic detail is editable within the SRT Settings screen on the Clinic Details tab.
------------	--

Visit Details

Checking the **Visit Details** check box adds two fields, Tester name and Duration of Protocol, to the report

Nutritional timetable

Checking the **Nutritional timetable** check box adds the product usage timetable to the report. This is called a **Fridge Report** by some as it can be pegged to the fridge as a reminder of when to use the products.

Here is an example report with **Nutritional timetable**:

Current protocol

Item names	Upon arising	Break-fast	10a	Lunch	Lunch 3pm	Dinner	8pm	Before bed
Betaco® 40C		1		1		1		
Catalyn® 360T		1		1		1		
Chlorophyll Complex Ointment (TM) 18 gram Jar			1					
Zypan® 330T		2		2		2		

Nutritional history

Checking the **Nutritional history** check box adds the historic product usage timetable to the report.

Here is an example report with **Nutritional history**:

Historic protocols

Item names	Upon arising	Break-fast	10a	Lunch	Lunch 3pm	Dinner	8pm	Before bed
As of 2/19/2012 5:09:43 PM								
Betaco® 40C		1		1		1		
Catalyn® 360T		1		1		1		
Chlorophyll Complex Ointment (TM) 18 gram Jar			1					
Zypan® 330T		2		2		2		

Readings

Checking the **Readings** check box adds a readings list to the report. There are four order variations depending on the **Points Sorted in** drop down order selected. **Point order** is the order that the point readings were taken. **Alphabetic order** is the point readings in alphabetic point name order. **High to low** is in numerical Point Reading order with high readings first and low readings last. **Low to High** is in numerical Point Reading order with low readings first and high readings last.

Here is an example report with **Readings**:

Readings

Alliin	36	Corn	40	Crowns	48	Dairy cream	52
Edu R belief clea	52	Food additives	76	Food additives li	80	Grain weevil	80
Heavy Metal	64	Hormone Mix	56	Mineral salts	60	Nightshade alkalo	60
Nutriveda	68	Phenolics	76	Salicylamide	72	Salsolinol	76
Sheeps sorrel	80	Spice diet	76	Sugars	96	Vegetable gum mix	96
Vitamins complete	96	Yearning	96	Ajax cleanser wit	24	Alli	8
Alliicin	12	Allyl lonone	16	Chinese long bean	-180	Chives	-108

Readings in full

Checking the **Readings in full** check box adds the readings with an outcome graph and associated product of each to the report.

Here is an example report with **Readings in full**:

Readings

Area	Outcome	Graph
Food additives	76	
Betaco® Mineral salts	60	
Renafood® Phenolics	76	
Livaplex® Vitamins complete	96	
Zypan®		

Tip	Unless the abnormal list that was selected was short, the Readings and Readings in full options may add many pages to the report. So, in general do not check these options unless you really need this detail, or you only selected a few abnormal.
------------	--

Selected Products

Checking the **Selected products** check box adds a brief list of products to the report. Here is an example with the **Selected products** check box checked:

Selected products

Betacool® 40C
 Cataly n® 360T
 Chlorophyll Complex Ointment (TM) 18 gram Jar
 Zypan® 330T

Product details

Checking the **Products details** check box adds a full list of products with their instructions to the report. Here is an example with the **Products details** check box checked:

Selected products

Betacool® 40C
 One Tablet per meal or as directed

Cataly n® 360T
 Three tablets per day, or as directed.

Chlorophyll Complex Ointment (TM) 18 gram Jar
 To be applied locally as an emollient.

Zypan® 330T
 Two tablets with each meal, or as directed.

Tip If both **Readings** and **Readings in full** options are selected, then only **Readings in full** is used.

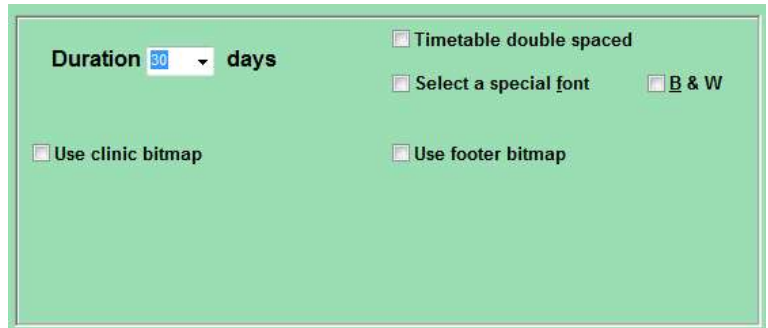
Tip If both **Selected products** and **Products details** options are selected, then only **Products details** is used.

Report Options

Some report features have options that can be set and changed to customize the report. There are some options that apply to all reports.

Duration in Days

This is the number in days that is used in the reports. The combo allows many time-periods to be selected but a custom number can be type in.



Timetable double spaced

This expands the height of the **Nutritional timetable** in the report with a blank line between each product to better allowing for handwritten notes to be later added to the report printout.

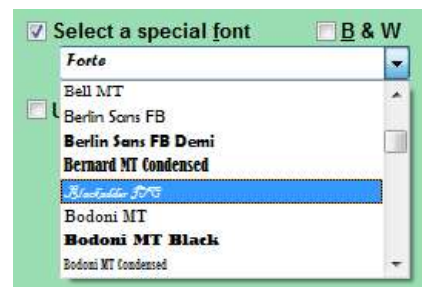
Special font

Place a checkmark next to the option “Select a special font”.

Note If a special font is not selected, the default font used will be *Arial*.

Then click the **Font** selector drop-down arrow and select the desired font type from the list.

Tip There are many free fonts websites on the internet to add interesting new fonts to your Windows.

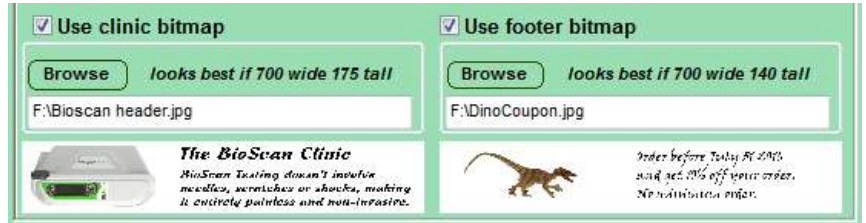


B&W (Black and white)

It is strongly recommended that each client receives a color printout of their report. In situations where a color printer is not available, place a checkmark next to the B&W option in the reports screen. Color elements will be differentiated by a unique series of diagonal lines.

Use clinic header

If **Use clinic header** is checked, then the selected image is used in all report headers. Click the **Browse** button to select the custom clinic image.



Tip The **Settings screen Clinic tab page** has a **Build your own Header or Footer wizard** that is an easy to use system to build your own custom Header or Footer image. See the **SRT Controlling Settings** section for details on creating a custom header or footer.

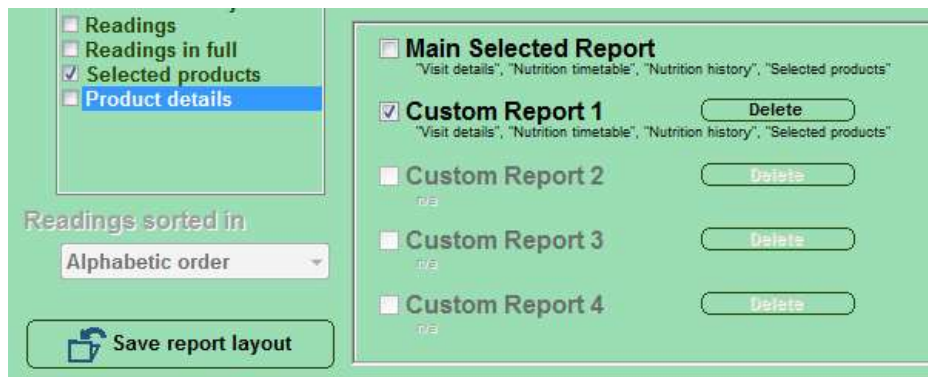
Note You can use a paint or photo program to make a custom header bitmap. The size of a header and footer bitmaps should be at least 700 pixels wide by 175 pixels high. If the file resolution is set at 300 dpi, this would be a finished size no larger than 2.33 inches wide by .58 inches high. However larger sizes are allowed but please use a scaling of 4 to 1 (width to height).

Use clinic footer

If **Use clinic footer** is checked, then the selected image is used in all report footers. If used then click the **Browse** button to select a custom clinic footer image.

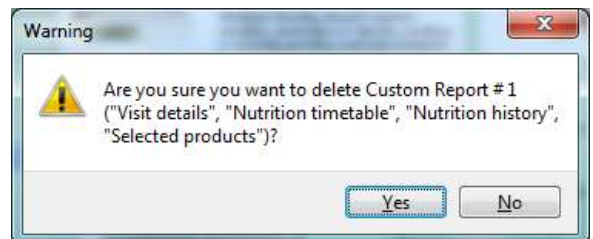
Saving report Layout

If you wish for several report layouts to be available, then save them each with the **Save report layout** button. Saved reports are added to your **Custom Report list** and can be selected for viewing via the check boxes. These report layouts will be available the next time you run **Nutritional**.



Delete report layouts

If you wish to erase a **Custom Report layout** then press the **delete button** next to each custom report. You get a confirmation-warning dialog. Press the **Yes** button to confirm you are sure about the report deletion.

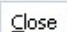


Performing Reports

Preview report

Click the **Preview report** button to preview display the report on the screen before sending it to the printer. Use it to view and compare these report features to determine which will work best.




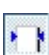







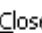




After previewing a report press the <ESC> key on the keyboard or use the **Close**  icon button on the preview toolbar to close the **Print Preview** screen. Printing can also be performed directly from the **Print Preview** screen.

Tip	<p>If the Preview screen ever gets “lost” then click the Find the Preview button, which should unhide and make visible the lost Preview screen. (See SRT Reporting Features - Preview Screen Finder section above.)</p>
------------	---

Previewing screen controls

Here are the control and features buttons on the Report Preview screen.

	Zoom - Full page		Go forward 1 page		Send report to printer
	Zoom -100%		Go to last page		Save the report somewhere else on the computer (or to a disk)
	Zoom - Page width		Select page number to view		Open a report that was saved on the computer (or to a disk)
	Go to first page		Search for text within the currently displayed report		Close preview and return to SRT screen
	Go back 1 page		Specify printer and number of copies		

PDF the report

Use the **PDF the Report** button to generate **PDF files** readable with PDF viewer software.

Print the report

Click the **Print report** button to send the reports directly to the default printer without being displayed on the screen.

Nutritional Details Saved

Product data saved

When a report is previewed or printed, the product data is automatically saved for the current visit to the SRT database. This saved data becomes available as historic data for future visits. But if data was already saved for this visit, then a dialog box will appear on the screen requesting if the data is to be overwritten with current data.

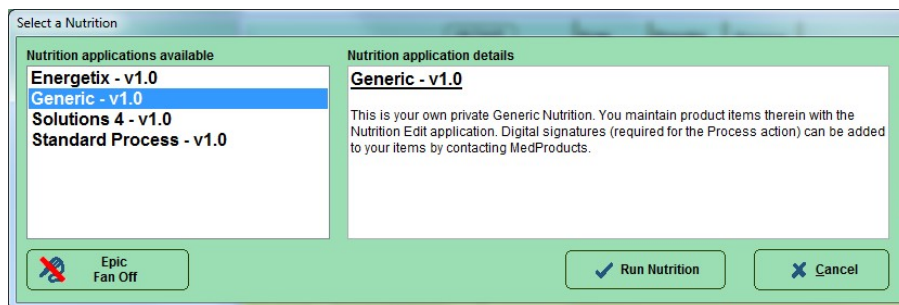
And if no report is previewed or printed then a dialog box will appear on the screen requesting if the data is to be saved for the current visit to the SRT database.

Clear Client's Nutritional history

The client's complete Nutritional history can be cleared from within the **SRT software** via the menu **Tools / Clear Client's Nutritional history**. A confirmation dialog is displayed.

Nutrition Editor

There is an open product **Nutritional** called **Generic**, which is user built and user editable. On initial use, this Nutritional is filled with generic product data that is not associated with any actual product in the SRT database.



The Generic Nutritional

If the idea of a **Custom Nutritional** is of interest to you where you have your set of custom products, then you will need to use the **Nutrition Editor** to connect to a source database of products.

Note The **SRT** software must be closed when making edits with the **Nutrition Editor**.
This will allow changes to be saved before **SRT** software accesses the data.

Using the Nutrition Editor Program

There are several ways to enter the **Client Profile** program:

1. Open the desktop folder called **SRT** and double click the **Nutrition Editor application**.
2. Or from the Windows **Start Button** → **All Programs** → **SRT** → **Nutrition Editor**.

The **Nutrition Editor** will start, and the main **Nutrition Editor** screen will appear. This system will allow for full entry and editing privileges and the data entered will be shared with the main **SRT** software.

