

# Dr. Marc Rosen

DC

"Anything that's ever been  
invented, had to work for

somebody,  
somewhere,  
at some time..."

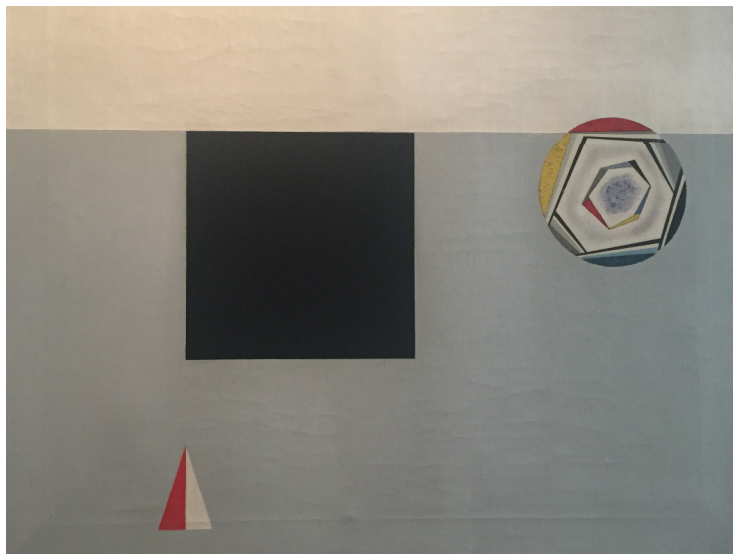


Dr. Marc Rosen or "Dr. Marc" as he is commonly called earned his undergraduate degree at Adelphi University in New York and continued on to his chiropractic education at New York Chiropractic College in the Glen Cove area of Long Island, New York. He has been treating patients in the Boca Raton area since 1994. Prior to moving to Florida, Dr. Rosen had a private practice in New City, New York for 8 years. He treats patients of all ages and welcomes all conditions and questions about health and well being.

Dr. Rosen's mission with every patient is to treat the whole body, encompassing the structural, physical, chemical and emotional components. He listens intently to each patient and spends as much time as needed to get to the root cause of all ailments. Recognizing that pain and spinal conditions arise from days, weeks, months or even years of physical, mental/emotional and chemical/nutritional stress, he utilizes many means of alternative therapies to resolve pain and lack of function, returning clients to vibrant health. His favorite motto with regards to his office is "At whatever hour you call, you will find light, health and human kindness."

He has successfully incorporated the BioScan SRT into his practice for the past 3 years and has seen amazing results using this technology.

Most people look at the glass as either half full or half empty but what really is being represented is the stressor. It's not whether the glass is half full or half empty, but how long someone is holding on to the glass. (or their stress)



# FedEx

5

International Health Technologies Conference - October 6th & 7th 2017



# FedEx

6

International Health Technologies Conference - October 6th & 7th 2017





## CASE 1. THINKING OUTSIDE OF THE BOX

### Presenting Issue:

Mom concerned about behavior of 18 month old boy. She was worried he might possibly be autistic. Grandmother watches the boy while mother is at work and he is out of control.

### Diagnosis & Consultation

- Play observation- noticed a lot of drooling.
- Muscle testing through contact reflex analysis
- Bioscan SRT through the boy's mother.
  - Biofeedback

IHT Fall User Conference 2017 October 6 & 7, 20177

## The Results

Point ID	Item	Dilution	Outcome	Type
AL-1b*R	Amino acids	Total Tincture	19	
AL-1b*R	Antibiotic	Total Tincture	16	
AL-1b*R	Beverage spirits	Total Tincture	182	
AL-1b*R	Beverages	Total Tincture	19	
AL-1b*R	Blossoming flowers	Total Tincture	-48	
AL-1b*R	Cats	Total Tincture	30	
AL-1b*R	Chemicals 1	Total Tincture	49	
AL-1b*R	Chemicals 2	Total Tincture	38	
AL-1b*R	Chemicals 3	Total Tincture	57	
AL-1b*R	Chemicals 4	Total Tincture	-90	
AL-1b*R	Combinations	Total Tincture	60	

Acute

Chronic

#### Further Scan & Analysis

- Chemicals 4 category: chronic results.
- When discussing results with the mother she told us the chemicals that came up on the scan are chemicals she mixes when she does dialysis (mother's occupation = dialysis nurse.)
- The chemicals got into the patient through her skin while he was in the utero. Additionally, if some chemicals were on her clothes and he then laid on her, then he could absorb them.

#### Processed

- 4 minutes everything out of range.

#### Recommended Vitamin

- Parotid PMG 1 tablet per day

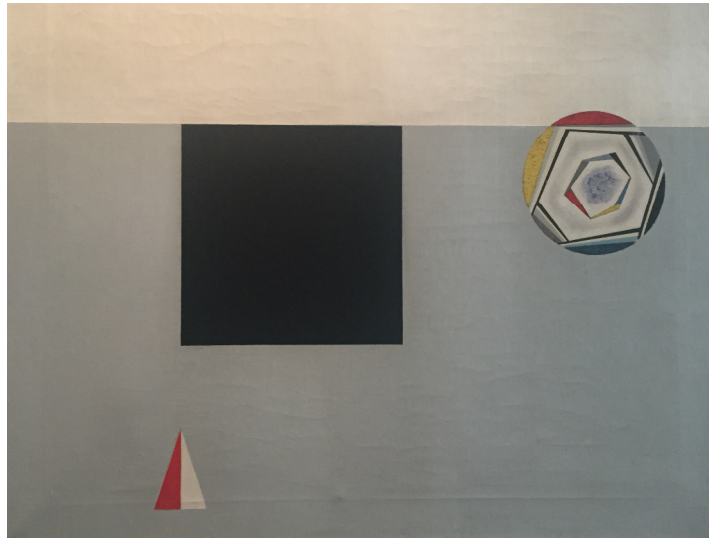
4 days later: The mother described him as a new child. Behavior under control.

But there's more.....



#### Why did "Spirited Beverage" Category Show Up?

- Mother realized that her son had been sucking on diaper wipes and that the her son's grandmother had given him her perfume bottle to hold while she changed his diaper because it "looked pretty and calmed him down."
- They found out he had been sucking on the perfume bottle that they thought was closed.
- Both the diaper wipes and the perfume have alcohol in them.



## CASE 2. THINKING OUTSIDE OF THE BOX

**Presenting Issue:**  
45 year old woman  
complaining of allergy  
symptoms to something in her  
yard.

**Diagnosis & Consultation**

- Did not go through  
"typical" protocol but  
instead went directly to the  
SRT antigen group.



#### Analysis of Results

- Plants and trees identified as stressors.
- Discussed the types of trees in the patients yard and determined **mango trees** may be a problem.

#### Out of the Box Action

- Found GENUS name for the particular mango tree and did a search.
- Ran in total & mother tinctures and both showed up as stressed.

During processing the allergic reaction went down immediately.

But there's more.....



#### Next Visit

- Patient significantly better but still having a reaction with swollen watery eyes.

#### Action

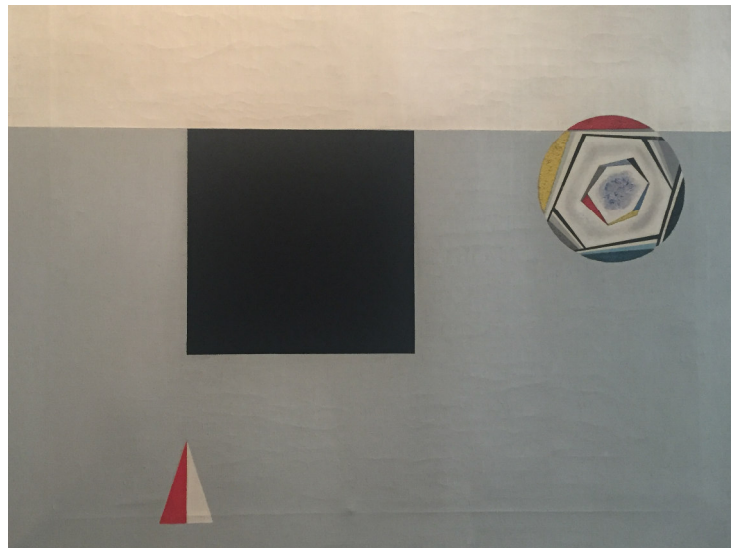
- Further research showed that the mango tree was in the same family as **Poison Ivy** and **Poison Sumac**.
- We did a search for these in the BioScan and when testing and processing, all symptoms dissipated immediately.



## The Results

<div> <div>Select All</div> <div>Abnormal</div> <div>Ab Top 25</div> <div>Clear</div> <div>25</div> <div>Ab Top Select</div> <div>Selected Count : 0</div> <div>Detail Scan</div> </div>				
Point ID	Item	Dilution	Outcome	Type
AL-1b*R	Nettle	Total Tincture	87	
AL-1b*R	Northern white cedar	Total Tincture	87	
AL-1b*R	Oak	Total Tincture	87	
AL-1b*R	Orache	Total Tincture	93	
AL-1b*R	Orchard grass	Total Tincture	87	
AL-1b*R	Osage orange	Total Tincture	93	
AL-1b*R	Pine	Total Tincture	103	
AL-1b*R	Plantain	Total Tincture	103	
AL-1b*R	Poison ivy	Total Tincture	98	
AL-1b*R	Poison oak	Total Tincture	240	
AL-1b*R	Poison sumak	Total Tincture	103	

Acute







## CASE 2B. THINKING OUTSIDE OF THE BOX

Presenting Issue: 60 year old female patient coughing for 6 months. She had been to "every doctor" and "taken everything" with no results. She described her coughing as so bad that her coworkers knew when she was coming because they could hear her cough.

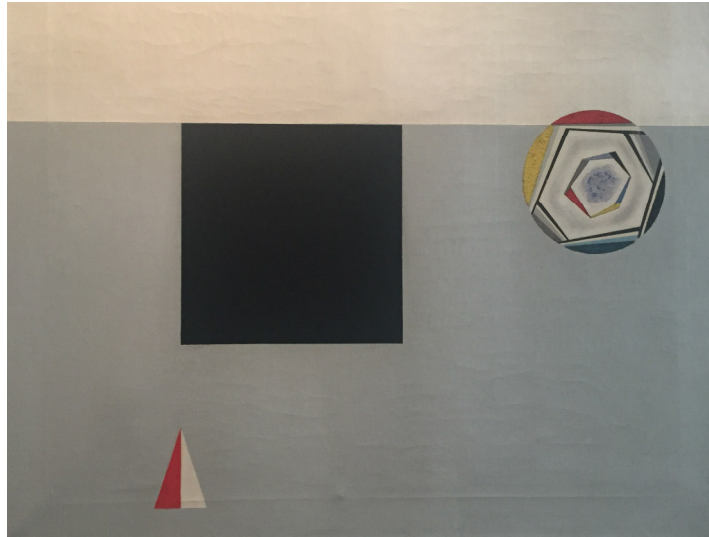
Out of the Box Action:  
Bioscan SRT Antigen Group

IHT Fall User Conference 2017 October 6 & 7, 2017

- Trees showed up as a stressor and after further exploration into the tree category, a particular tree showed up with a high number.
- Patient's husband in the room noticed this was a tree in their backyard.
- Processed specific tree category and patient did not cough for 3 months!
- Patient returned after 3 months and we re-did the same test. The tree showed up again and we processed her. Again, the coughing went away!

<div> <div>Select All</div> <div>Abnormal</div> <div>Ab Top 25</div> <div>Clear</div> <div>25</div> <div>Ab Top Select</div> <div>Selected Count : 0</div> <div>Detail Scan</div> </div>				
Point ID	Item	Dilution	Outcome	Type
AL-1b*R	Animal allergens	Total Tincture	25	
AL-1b*R	Dust & fumes inhalants	Total Tincture	10	
AL-1b*R	Grasses	Total Tincture	1	
AL-1b*R	Plants & pollens 1	Total Tincture	-6	
AL-1b*R	Plants & pollens 2	Total Tincture	136	
AL-1b*R	Trees	Total Tincture	-8	
AL-1b*R	Weeds	Total Tincture	3	
AL-1b*R	Animal allergens	Mother Tincture	-6	
AL-1b*R	Dust & fumes inhalants	Mother Tincture	-12	
AL-1b*R	Grasses	Mother Tincture	-13	
AL-1b*R	Plants & pollens 1	Mother Tincture	-13	

Acute



### CASE 3. THINKING OUTSIDE OF THE BOX

#### Presenting Issue:

63 year old man with a severe, chronic case of eczema that he had been suffering with since 15 years of age.

- Flaking from consistently scratching.
- Red patches throughout body (legs, arms, head, feet, groin, torso.)

#### Bioscan Action

- Body 100 and worked through entire program.



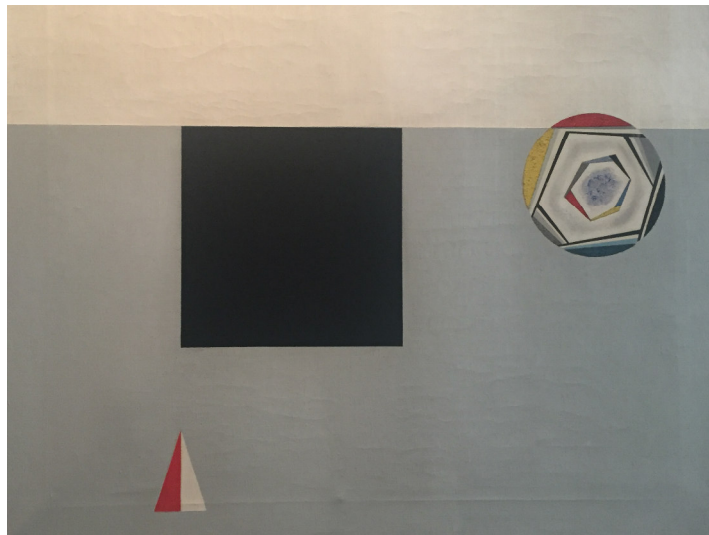
## Results

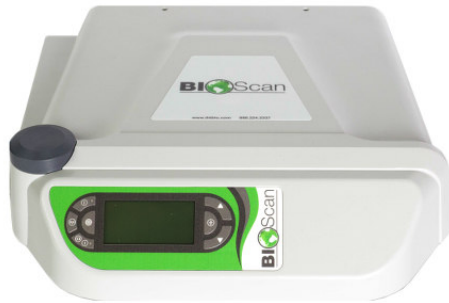
Radiation Stress Factors and Dust and Fume Inhalants.

Patient occupation: fixes computers for a living and previously worked in a newspaper factory in his 20s.

## Action

- Over a period of 2-3 months the patient came in 2-3 times per week.
- Each visit we processed the abnormal of whatever test we were working on and his skin stopped itching for 72 hours. We would also test all the skin categories and process those abnormals.
- Emotions were an issue for this patient as well and we would intermittently run different emotional categories just to keep those in check.
- By the time we had completed entire protocols of all the folders, his skin was 90% cleared up with no redness or itching.
- We also recommended dietary changes and different vitamin protocols but the patient recognized that the itching would subside for the 72 hours from just processing with the Bio Scan.





Interesting fact: Worked for a chiropractor for many years, believes in everything holistic, eats organic, gets colonics, uses essential oils etc. BUT still feels miserable.

## CASE 4. THINKING OUTSIDE OF THE BOX

### Presenting Issue

- 77 year old female who has lots of physical pain in her neck and back. Can barely walk and uses a cane. Lots of other ailments- UTI, parasites, and overall doesn't feel well. Came in for chiropractic adjustments and other nutritional treatments for a few months but then discontinued treatment for over 6 months.
- When she came back to the office we decided to only use the Bioscan on her.

25  
IHT Fall User Conference 2017 October 6 & 7, 20177

### Bioscan Out of the Box

- During first testing could not get any readings whatsoever. Tried everything to get the voll meter registering any number. Finally squeezed on the tape and was able to get a 5 or 6 reading on the voll meter.
- Due to her complaint of feeling "sick and so miserable," we decided to start with detox and drainage and work backwards.
- The thinking was if we could get her to detox her body ever so slightly then we can proceed to the other categories and figure out what was blocking her.

Address	7300 West Camino Real Suite 104	Email Address	
City	Boca Raton	Internet Address	
State or Province	Florida		
Zip or Postal Code	33433		
Country			

*Processed*  
*Test & process each 15 category then go back & test*

Confidential Client Information			
Client Number	00301	Visit Number	144
Name	Joroff, Marcia	Date and Time	7/29/2017 4:31:22 PM
		Tester	

*TOTAL TINCT. Body 100 Biofeedback SALT AND SENSITIVE*  
*DONE → DETOX DRAINAGE & ELIM.*

Items Tested	From Group	Dilution	Outcome	Graph
1. Energy Isodes	Detox, Drainage and Elimination	Mother Tincture	15	
2. Energy Core Formulas	Detox, Drainage and Elimination	Mother Tincture	15	
3. Energy System Formulas	Detox, Drainage and Elimination	Mother Tincture	15	
4. Energy Nosode Combinations	Detox, Drainage and Elimination	Mother Tincture	15	
5. Homeopathic Combination	Detox, Drainage and Elimination	Mother Tincture	15	
6. Drainage Energy Remedies	Detox, Drainage and Elimination	Mother Tincture	15	
7. Glandulars	Detox, Drainage and Elimination	Mother Tincture	8	
8. Homeopathic Detox	Detox, Drainage and Elimination	Mother Tincture	-2	
9. Meridian Energy Openers	Detox, Drainage and Elimination	Mother Tincture	-4	

## Visit 138

## Scan Readings Report

Items Tested	From Group	Dilution	Outcome	Graph
1. Kidney Vessel	Meridian Energy Openers	Total Tincture	219	
2. Triple Warmer	Meridian Energy Openers	Total Tincture	0	
3. Heart/Small Intestine	Meridian Energy Openers	Total Tincture	-2	
4. Liver/Gallbladder Vessel	Meridian Energy Openers	Total Tincture	-2	
5. Lung/Large Intestine	Meridian Energy Openers	Total Tincture	-2	
6. Governing Vessel	Meridian Energy Openers	Total Tincture	-5	
7. Governing/Conception Vessel	Meridian Energy Openers	Total Tincture	-20	
8. Pericardium	Meridian Energy Openers	Total Tincture	-21	
9. Small Intestine	Meridian Energy Openers	Total Tincture	-22	
10. Urinary Bladder	Meridian Energy Openers	Total Tincture	-22	
11. Stomach/Spleen	Meridian Energy Openers	Total Tincture	-22	

## RESULTS

- Patient is starting to feel more alive with each test that is run and processed. Pain in her back is easing up and able to do neck adjustments much easier.
- See her 3 times per week for over an hour of testing.

## BUT THERE'S MORE

- In talking with the patient and knowing her for so long, we knew something was missing. Finally we realized that she was a distributor for Young Living Oils for 20 years and very much a proponent of taking oils and using oils.
- Bioscan: Ran the **Young Living Oils Category**

## Another breakthrough!

### Scan Readings Report

Items Tested	From Group	Dilution	Outcome	Graph
1. Young Living Single Oils	Young Living Essential Oils and	Mother Tincture	13	
2. Oil Blend Formulations	Young Living Essential Oils and	Total Tincture	2	
3. Young Living Food Supplements,	Young Living Essential Oils and	Total Tincture	2	
4. Oil Blend Formulations	Young Living Essential Oils and	Mother Tincture	2	
5. Kits and Packages	Young Living Essential Oils and	Total Tincture	0	
6. Young Living Single Oils	Young Living Essential Oils and	Total Tincture	0	
7. Young Living Food Supplements,	Young Living Essential Oils and	Mother Tincture	0	
8. Kits and Packages	Young Living Essential Oils and	Mother Tincture	-117	

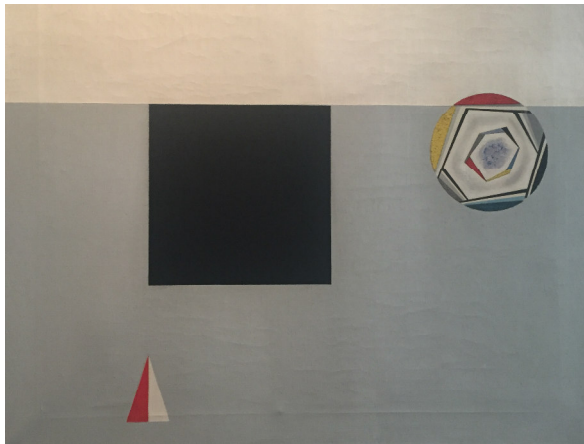
Chronic



End result:

- Patient is able to drive herself around and walk without her cane. Has significant less pain and less UTI involvements.
- While evacuating from the hurricane and checking on us she sent this message:

“Just telling Howard (her husband) how much Marc has helped me. I will forever be grateful.”



We are not done yet...



### Be a Hill Seeker.

Most of us try to avoid hills, but what's so good about flat? Think about it. flat tires, flat hair, flat returns and —the ultimate—flat lining.

Life happens on the hills. They're opportunities to prove to yourself that you're stronger than you've ever imagined. If you never attempt the ascent, you'll never know the thrill of swooshing down the other side.

## KEY TIPS FROM:



**TREAT ALL PATIENTS HANDS ON,  
LISTEN TO YOUR PATIENTS AND  
THEIR LIFE STORIES...**

*Think outside of the box,  
explore the impossible and  
keep an open mind.*

**DR. MARC ROSEN DC**  
**[www.rosenhealth.com](http://www.rosenhealth.com) t. 561 392 5555**