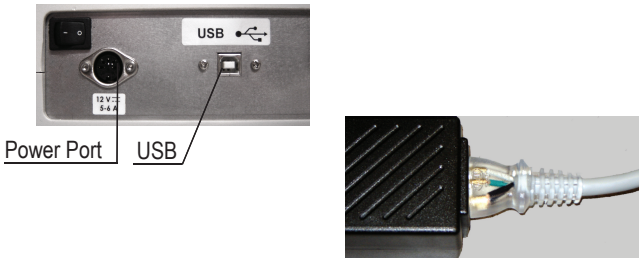


A Connecting the Power Supply and USB cable

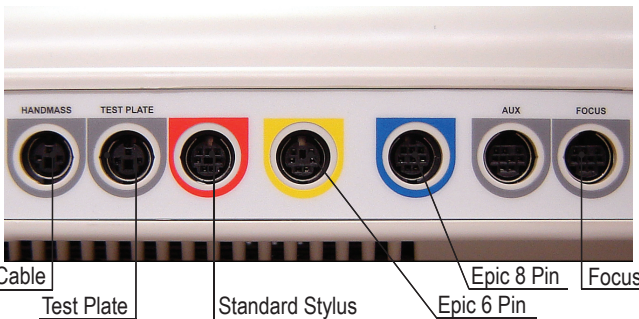
The power supply and USB ports are in the back of the unit. Line up the pins of the power supply and plug it into the correct port, also be sure to plug the three prong cable all the way into the power supply. The USB cable will insert only when correctly orientated with the slot, insert the other end of the cable into an open USB port on your computer.



WARNING: The unit requires a special power supply, this is provided with the unit. Plugging in a different power supply will cause damage to the circuitry and will void any warranty.

B Connecting the Accessories

Accessory plugs are color-coded and the accessory ports are located on the left side of the unit. Gray is for the handmass cable and optional test plate, Red is for the standard stylus, Yellow is for the Epic 6 pin, Blue is for the Epic 8 pin. Be sure to line up the pins and plug each into the correct port. **Do not force as pin breakage is possible and will void any warranty.**



C 1 | Place the MSA Software in the CD-ROM drive of your computer. If the installation routine does not automatically begin, click the Start button, click Computer, Double click the CD-ROM drive, right click the **MSA** file, and then chose **Run As Administrator**.

2 | When the software installation is completed click **Finish**. The computer may need to be restarted. Click **OK** to restart.

3 | After the computer restarts and all icons have appeared on your screen wait an additional minute to ensure the system is fully started. Double click the **MSA** folder on the desktop and then right click the **MSA** icon, left click **Properties**, left click the **Compatibility** tab, checkmark **Run this program as Administrator**, and then click **OK**.

4 | Double click the **MSA** icon, a few finalizing software configuration steps will occur and the software will be ready for use.

5 | Double click the **MSA** icon to open the software.

Software Authorization

Please ensure your computer is connected to the internet. The software needs to be authorized upon first use and at regular intervals throughout the year. The purpose of this authorization system is to accommodate both customers on a lease program as well as prepaid. Those on a lease program must remain current with scheduled payments to continue use. Those who have prepaid are still required to reauthorize, however there are no pre-conditions attached. The first time you run the MSA software an authorization process will begin.

Type in the case-sensitive **User Name**, **Password**, and **Serial Number** provided to you from IHT into the fields and then click **Authorize**. After a few moments the software will then be ready for use. Double click the **MSA** icon again.

D Power On and Off

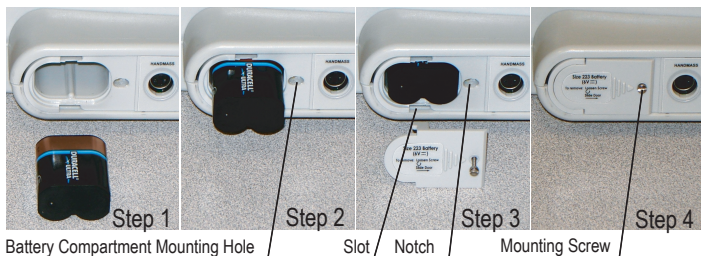
To turn power on put the power switch in the back of the unit to the "ON" position, this is indicated by the symbol "I". Double click the MSA icon on the computer screen to open the software. To turn power off, first close the MSA software by clicking the red X in the top right corner of the screen. The software may perform maintenance while closing, please wait for this to complete. Put the power switch in the back of the unit to the "OFF" position, indicated by the symbol "O".



Power Switch

Replacing the Battery

The unit is shipped with a battery already installed which has an expected lifespan of approximately 3-6 months depending on use. The battery is located on the left side and towards the back of the unit. To replace the battery, Step (1) unscrew the battery door mounting screw from the battery compartment mounting hole. Do not attempt to completely remove the mounting screw from the battery door. Slide the battery door towards the front of the unit until the battery door notch clears the battery compartment slot. Lift the right edge of the unit so that the battery slides out. Step (2) Insert the metal connector end of the battery by ensuring the flat side is facing up and the grooved side is facing down. Step (3) Install the battery door by reversing the procedure in Step (1).



Battery Compartment Mounting Hole

Slot

Notch

Mounting Screw

Can I install additional software or use the Internet?

IHT recommends against installing any additional software to lessen the chance of a software conflict between applications that could interfere with proper operation of the equipment. Internet connectivity is required for regular authorizations of your software as long as the file-scanning-only software Microsoft Security Essentials or Windows Defender (not an internet security suite) is installed and the operating system firewall is enabled.

IHT DISCOURAGES USE OF ANY SOFTWARE WITH THE EXCEPTION OF DATA BACKUP SOFTWARE OR DRIVERS REQUIRED TO USE A PRINTING DEVICE. IHT DOES NOT SUPPORT PROBLEMS THAT MAY ARISE AS A RESULT OF UNAUTHORIZED SOFTWARE INSTALLATION.

IHT cannot guarantee software conflicts will not occur nor provide technical support when additional software is installed on the system. You will need to uninstall the extra software before contacting IHT.

Is there additional support and training available?

There are many resources available for additional support and training:

User Manual - The user manual is included on the CD and contains instructions on proper setup, installation, maintenance, and operation of your equipment. Your user manual is an excellent resource to answer questions and learn more about your new equipment.

Online - <http://www.ihbio.com> contains helpful knowledge base articles, recommendations, links, and downloads to keep your equipment running at its best.

Training - We require all new users of the system to receive basic training on proper use of the equipment and software. Training courses are held regularly and can be scheduled by calling IHT at 801-889-2224.

Seminars - There are many excellent training courses offered from various groups. We encourage all users to visit our website at www.ihbio.com for upcoming events as well as links to some of our preferred partners and the events they offer.

On the Phone - Our customer service department is ready to help from 8 A.M. to 5 P.M. Mountain Time. Contact us at 801-889-2224.

International Health Technologies

2355 South 1070 West, Suite D
Salt Lake City, Utah 84119
tel: 801-889-2224
fax: 801-931-2056