



ANNUAL GLOBAL USER CONFERENCE

Please join us for our Annual User Conference, which is being held at the Hyatt Centric Resort in Park City, Utah on October 6th & 7th. This is a fantastic opportunity to hear some of the great names in health care speak about how they use our equipment in their very successful practices. It is also a chance to network and meet other practitioners in similar industries, paving the way for collaborations, referrals & lifelong friendships. The 2017 conference will focus on case studies and the clinical protocols used to support them.

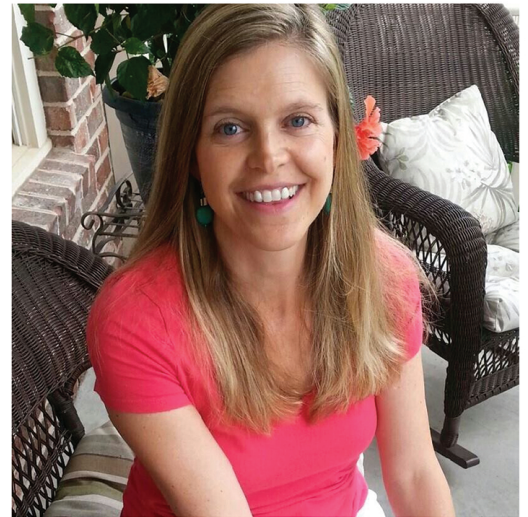
HOLISTIC NUTRITIONAL CONSULTANT

Anna is a certified nutritional consultant and she is also a certified Light Energy Coach with the Board of Alternative Natural Health Sciences. She holds a BA in Psychology and is certified in the Kalish Method of Functional Medicine. She sat on the Wellness Panel of the Heimerdinger Foundation (2011-14) and is a member of the Member of American Association of Nutritional Consultants (2010 - present). She also holds a Christian Minister's License and is currently the Certified Nutritional Consultant and Light Energy Technician at Integrated Spine and Joint at Westhaven and also at DesiNou, LLC.

Anna's interest in holistic wellness stems from her personal journey. She had suffered for many years from chronic fatigue syndrome, joint and muscle pain, and multiple infections. A chance appointment with a holistic dentist led her not only to wellness but also to go on to study and qualify. Feeling better, encouraged her to learn all that she could about natural healing and holistic health. Anna is now truly passionate about sharing this knowledge, and the resources that have helped her. One of the more unusual ways that Anna uses the MSA and VLEdit, is to help her create individual essential oil customs for her clients, creating the ideal blend for each individual helping them to achieve emotional balance, stamina, and immunity.

"Our emotional balance sessions are awesome! You are such an inspirational woman!" Patient Testimonial

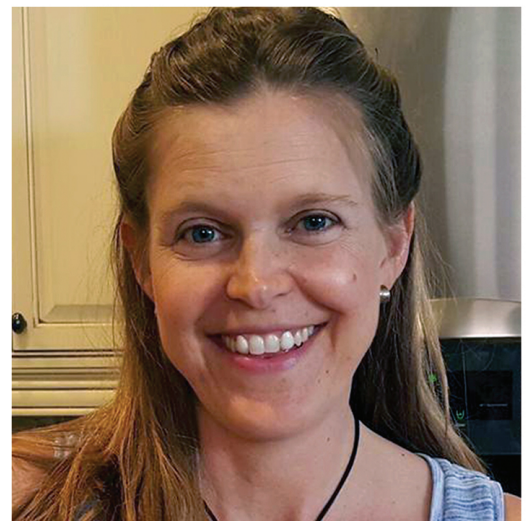
For guests staying at the Hyatt Centric Resort,
Conference Attendees discounted room rate \$180.42 inc all taxes.
Standard Conference Price \$449/person
Early Registration Special \$249/person
Extra person from the same office \$199/person



ANNA AYCOCK CNC

www.desinou.com

www.facebook.com/DesiNou



Mike Venzke (801) 889-2319 mike@ihtbio.com

2355 S 1070 W Suite D, Salt Lake City, UT 84119 www.ihtbio.com